

This drawing contains design and other information which is the property of SpaceAge Control, Inc. Except for rights expressly granted by contract to the United States Government, this drawing and data disclosed herein or hereon is not to be reproduced, used, or disclosed in whole or in part to anyone without the written permission of SpaceAge Control, Inc.

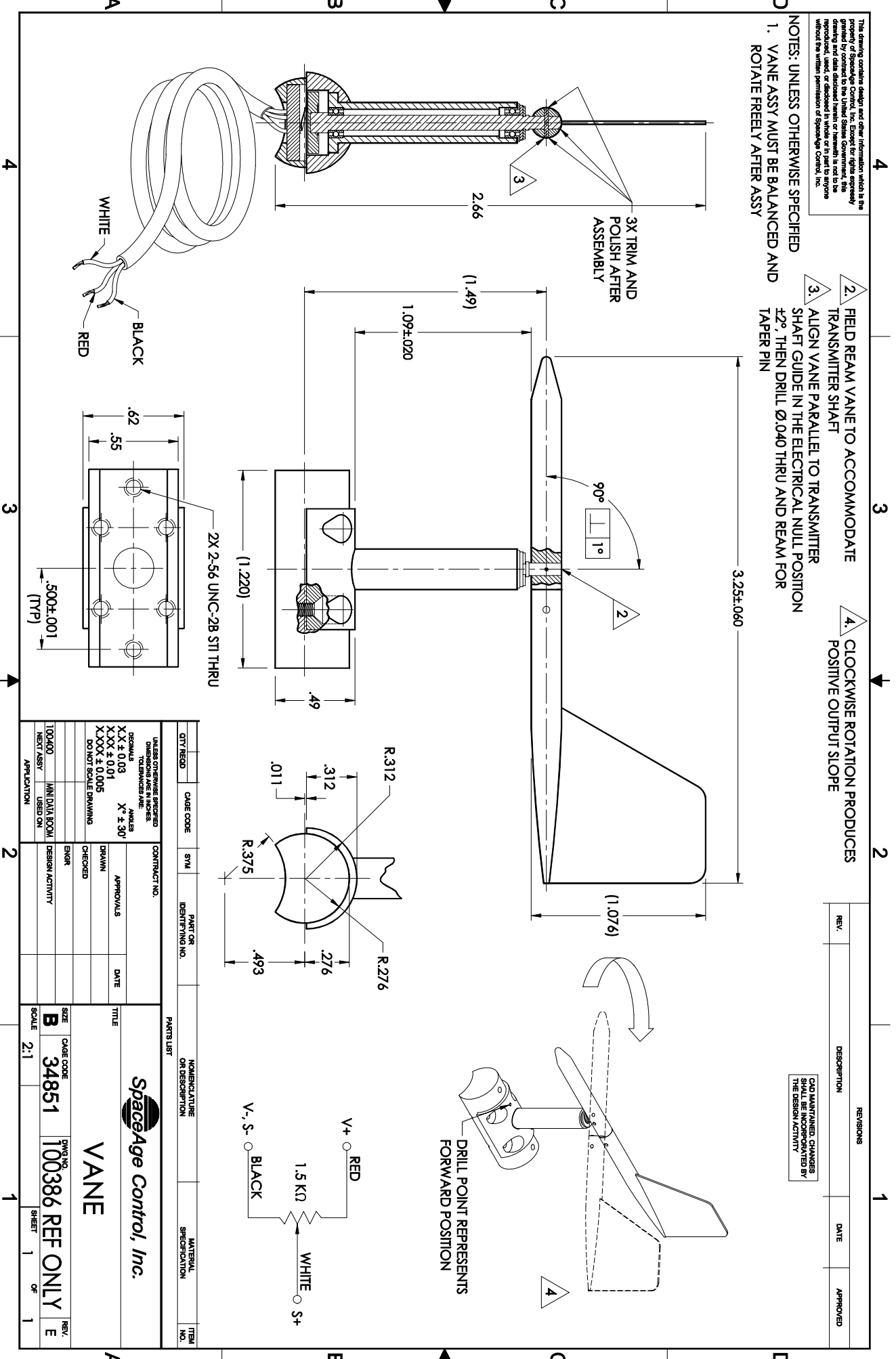
1. VANE ASSY MUST BE BALANCED AND ROTATE FREELY AFTER ASSY
2. FIELD REAM VANE TO ACCOMMODATE TRANSMITTER SHAFT
3. ALIGN VANE PARALLEL TO TRANSMITTER SHAFT GUIDE IN THE ELECTRICAL NULL POSITION $\pm 2^\circ$. THEN DRILL $\varnothing .040$ THRU AND REAM FOR TAPER PIN
4. CLOCKWISE ROTATION PRODUCES POSITIVE OUTPUT SLOPE

ALL MAINTAINED CHANGES SHALL BE INCORPORATED BY THE DESIGN ACTIVITY

REV.	DESCRIPTION	DATE	APPROVED

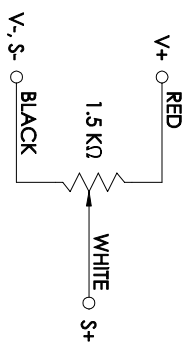
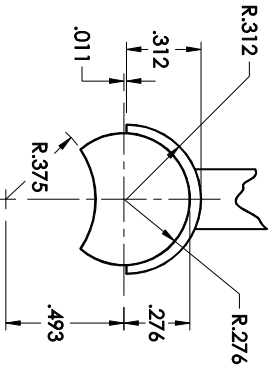
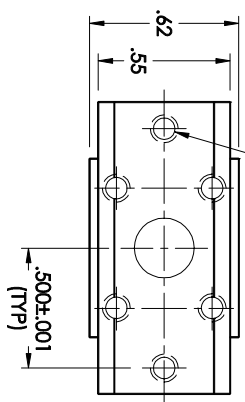
3X TRIM AND POLISH AFTER ASSEMBLY

DRILL POINT REPRESENTS FORWARD POSITION



2X 2-56 UNC-2B STI THRU

WHITE
BLACK
RED



UNLESS OTHERWISE SPECIFIED DIMENSIONS ARE IN INCHES TOLERANCES ARE:		CONTRACT NO.		PARTS LIST		NONNOMENCLATURE OR DESCRIPTION		MATERIAL SPECIFICATION		ITEM NO.	
QTY REQD	CAGE CODE	SYM	PART OR IDENTIFYING NO.	APPROVALS	DATE	TITLE	CAGE CODE	DWG NO.	REV.		
						VANE	34851	100386	REF ONLY		
TOLERANCES: XX ± 0.03 ANGLES X' ± 30' XXX ± 0.01 XXXX ± 0.005 DO NOT SCALE DRAWING				DESIGNER: _____ CHECKED: _____ ENGR: _____		MAIN DATA ROOM USED ON: _____ APPLICATION: _____		SIZE: B SCALE: 2:1		SHEET 1 OF 1	

SpaceAge Control, Inc.

VANE

34851 100386 REF ONLY

4 3 2 1