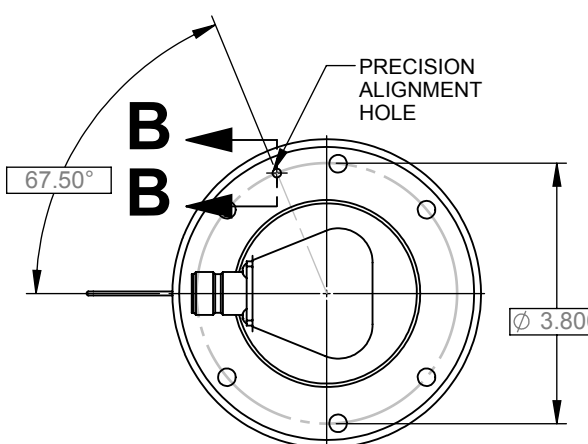
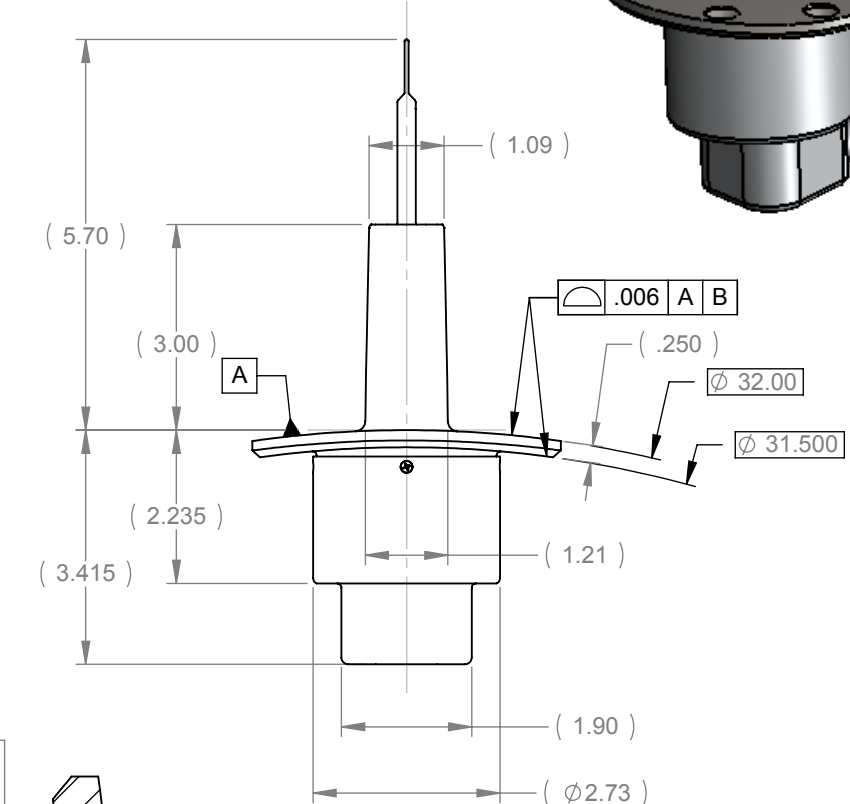
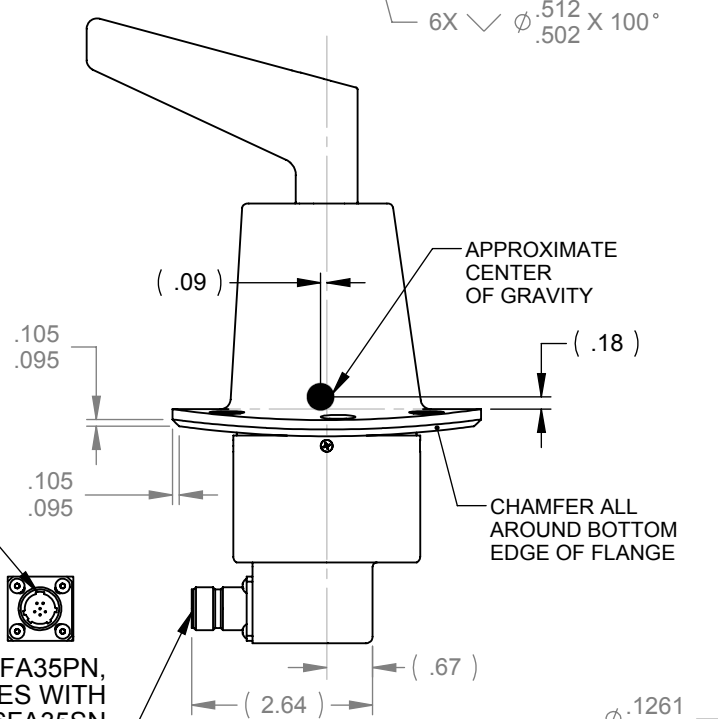
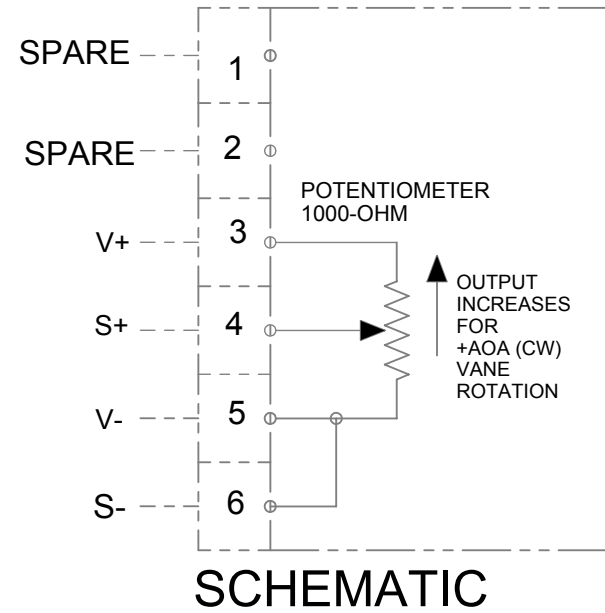
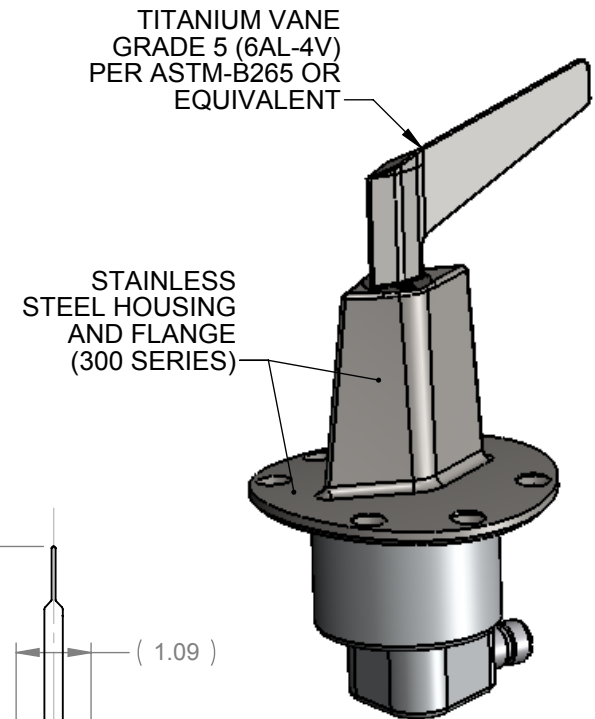
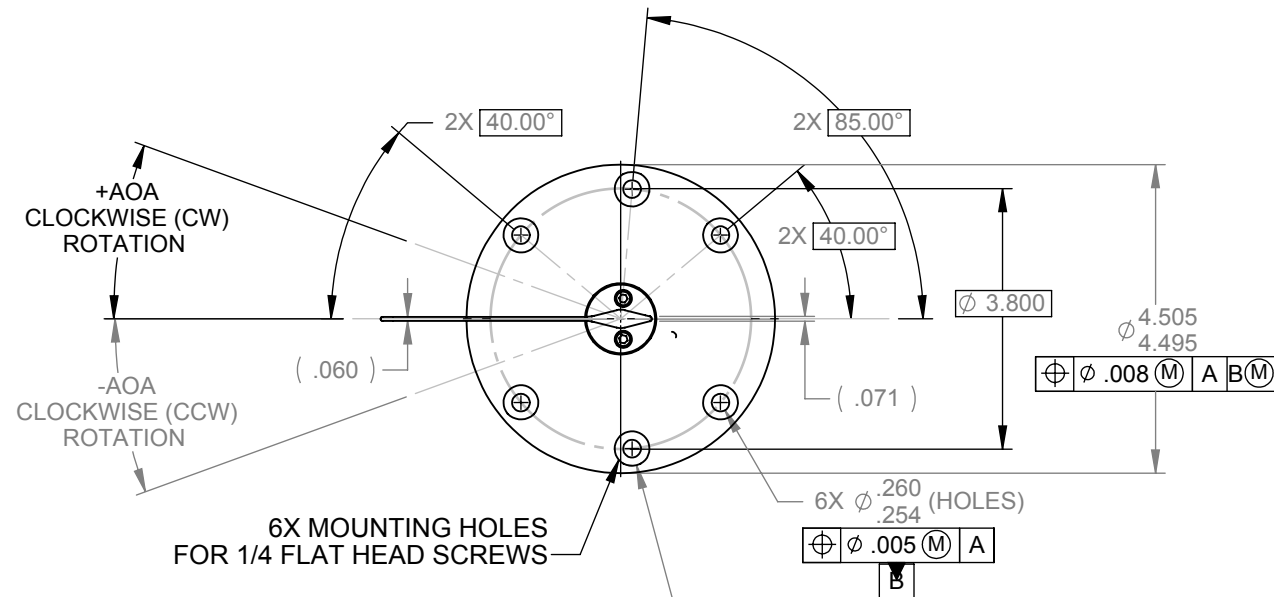


This drawing contains design and other information which is the property of SpaceAge Control, Inc. Except for rights expressly granted by contract to the United States Government, this drawing and data disclosed herein or herewith is not to be reproduced, used, or disclosed in whole or in part to anyone without the written permission of SpaceAge Control, Inc.



NOTES (UNLESS OTHERWISE SPECIFIED):

- DESCRIPTION: ANGLE OF ATTACK (AOA) VANE WITH RAISED SUPPORT AND HIGH TEMPERATURE MATERIALS IN FLOW PATH.
- WEIGHT: 3.5 LB MAX (2.9 LB APPROXIMATE)
- MECHANICAL TRAVEL: CCW STOP IS AT  $-20^\circ \pm .25^\circ$   
CW STOP IS AT  $+20^\circ \pm .25^\circ$
- ELECTRICAL CHARACTERISTICS:
  - POTENTIOMETER RESISTANCE: 800 - 1200 OHMS
  - POTENTIOMETER POWER DISSIPATION: 1.0 WATT MAXIMUM AT  $70^\circ\text{C}$ .
  - WIPER CURRENT (PIN 4): 10 mA MAX PEAK, 1.0 mA MAX CONTINUOUS
  - ELECTRICAL OUTPUT AT -AOA MECHANICAL STOP:  $>1\%$  OF INPUT VOLTAGE
  - ELECTRICAL OUTPUT AT +AOA MECHANICAL STOP:  $<99\%$  OF INPUT VOLTAGE
  - ELECTRICAL RANGE:  $91^\circ$  MAX
  - OUTPUT VOLTAGE INCREASES WITH +AOA (CW) ROTATION OF VANE
  - OUTPUT VOLTAGE AT ZERO: 2.49 - 2.50 VDC (BASED ON 5.00 VDC INPUT)
  - OUTPUT VOLTAGE LINEARITY: BETTER THAN  $\pm .50\%$  FROM  $-20^\circ$  TO  $+20^\circ$
  - CALIBRATION: CALIBRATION DATASHEET TO BE SUPPLIED  
DATA POINTS TAKEN IN .50 INCREMENTS FROM  $-15^\circ$  TO  $+15^\circ$

**SPA PN 4376-01**

UNLESS OTHERWISE SPECIFIED DIMENSIONS ARE IN INCHES		PROJECT 210		SpaceAge Control, Inc.	
DRAWN <b>B.P.</b> DATE 22-05-08		CHECKED		<b>ANGLE OF ATTACK VANE</b>	
APPROVALS		DIGITAL - ON FILE			
MATERIAL SEE NOTES		DIGITAL - ON FILE			
FINISH SEE NOTES		DIGITAL - ON FILE		SIZE <b>B</b> CAGE CODE <b>34851</b> DWG. NO. <b>4376</b> REV. <b>-</b>	
CAD GENERATED DRAWING, DO NOT MANUALLY UPDATE		SCALE		SHEET 1 OF 1	