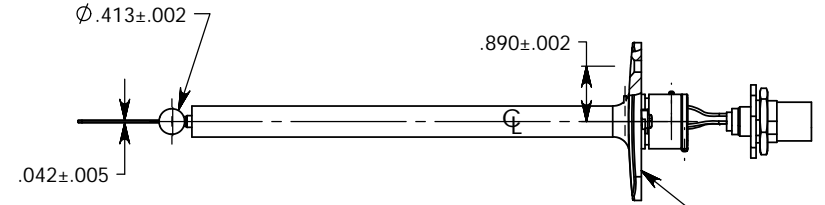
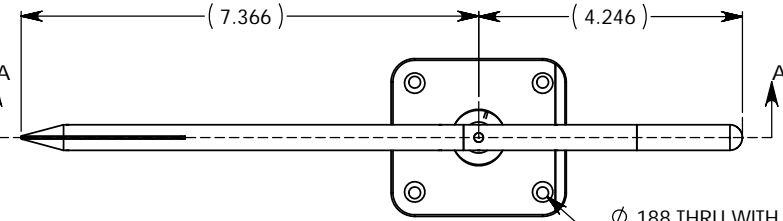


This drawing contains design and other information which is the property of SpaceAge Control, Inc. Except for rights expressly granted by contract to the United States Government, this drawing and data disclosed herein or herewith is not to be reproduced, used, or disclosed in whole or in part to anyone without the written permission of SpaceAge Control, Inc.

4228-01 BETA VANE ASSEMBLY

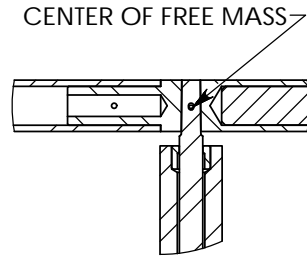
WARNING: Information subject to export control laws. This document, which includes any attachments and exhibits hereto, may contain information subject to International Traffic in Arms Regulations (ITAR) or Export Administration Regulations (EAR), which may or may not be exported, released, or disclosed to foreign nationals inside or outside the United States, without first obtaining an export license. Violators of ITAR or EAR may be subject to a penalty of ten years imprisonment and a fine of \$1,000,000, under Title 22, United States Code (U.S.C.), Section 2778, Control of Arms Exports and Imports, and Title 50 U.S.C., Appendix 2410. Violations include this notice with any reproduced portion of this document.

REVISIONS			
REV.	DESCRIPTION	DATE	APPROVED
-	PRODUCTION RELEASE	16JUL07	JJK
A	CHANGE WIRING HARNESS, CHANGE COLOR CODES	23AUG07	JJK

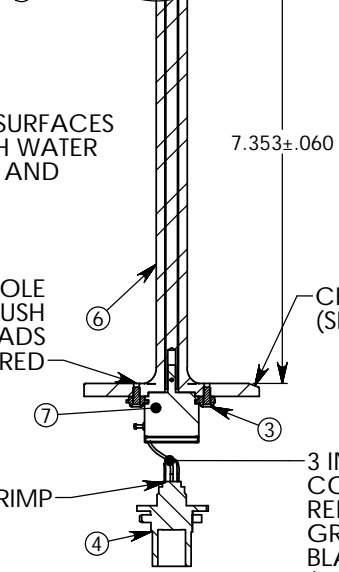
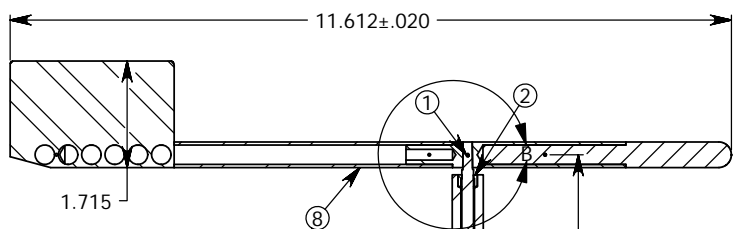
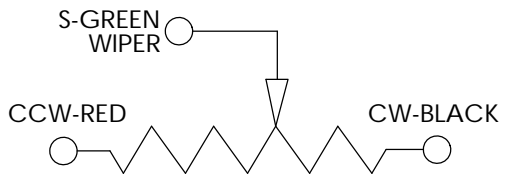


SERIAL NUMBER (SEE DRAWING 4228-08 FOR ENGRAVING DETAILS)

TOTAL MASS OF ASSEMBLY = 0.56 kg (1.23 lbm)
 TOTAL FREE MASS = 0.22 kg (0.5 lbm)
 MOMENT OF INERTIA (FREE MASS) = 0.0016 kg-m²



DETAIL B
SCALE 1 : 1



SECTION A-A
SCALE 1 : 2

NOTES:
 1. ALL EXPOSED METALIC SURFACES SHALL BE CLEANED WITH WATER AND ALCOHOL, BUFFED AND POLISHED.

2 X 4-40 UN-2B HOLE GRIND/REMOVE FLUSH CAM LOCK THREADS AS REQUIRED

CHAMFER LEADING EDGE (SEE DETAIL DRAWING)

3 INCH WIRING HARNESS COLOR CODED:
 RED (PIN 1)- +10 VDC
 GREEN (PIN 2)- SIGNAL
 BLACK (PIN 3)- COMMON (HARNESS LENGTH MEASURED FROM INSULATION. CONDUCTOR LENGTH NOT TO EXCEED 3.75 INCHES)

CRIMP

UNLESS OTHERWISE SPECIFIED DIMENSIONS ARE IN INCHES TOLERANCES ARE:
DECIMALS .X.X ± 0.03
ANGLES X° ± 30'
X.XXX ± 0.01
X.XXXX ± 0.005
DO NOT SCALE DRAWING
SEE NOTES
FINISH
SEE NOTES
CAD GENERATED DRAWING DO NOT MANUALLY UPDATE

PROJECT 187	
APPROVALS	DATE
DRAWN JJK	16/JUL/07
CHECKED JG	
ENGMFG JJK/TA	

SpaceAge Control, Inc.

BETA VANE ASSEMBLY

SIZE	CAGE CODE	DWG. NO.	REV.
B	34851	4228	A
SCALE	CAD FILE	SHEET OF	
NONE	SolidWorks 2006 4228.dwg	1 12	

NEXT ASSY	USED ON	APPLICATION