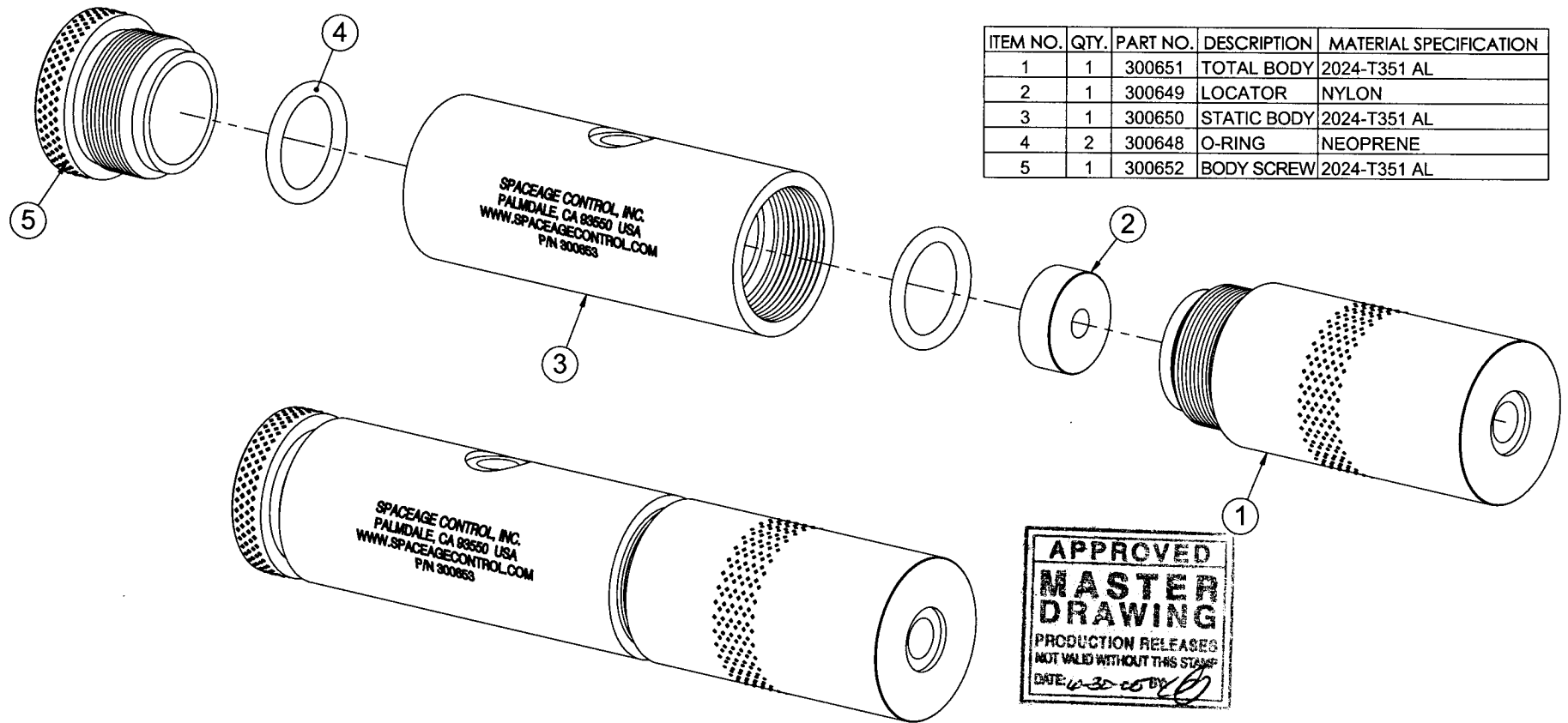


This drawing contains design and other information which is the property of SpaceAge Control, Inc. Except for rights expressly granted by contract to the United States Government, this drawing and data disclosed herein or herewith is not to be reproduced, used, or disclosed in whole or in part to anyone without the written permission of SpaceAge Control, Inc.

REVISIONS			
REV.	DESCRIPTION	DATE	APPROVED
A	PER ECO #879	12-19-01	S/SIMPSON
B	PER ECO #1205	5-24-05	<i>[Signature]</i>

ITEM NO.	QTY.	PART NO.	DESCRIPTION	MATERIAL SPECIFICATION
1	1	300651	TOTAL BODY	2024-T351 AL
2	1	300649	LOCATOR	NYLON
3	1	300650	STATIC BODY	2024-T351 AL
4	2	300648	O-RING	NEOPRENE
5	1	300652	BODY SCREW	2024-T351 AL

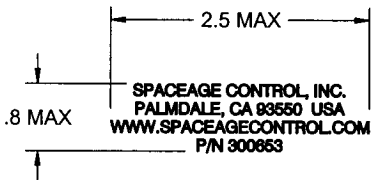


APPROVED
MASTER
DRAWING
 PRODUCTION RELEASES
 NOT VALID WITHOUT THIS STAMP
 DATE 4-30-05 BY *[Signature]*

NOTES: UNLESS OTHERWISE SPECIFIED

1. ENGRAVING SPECIFICATIONS:
 FONT: BLOCK
 HEIGHT: .1
 VERT LINE SPACING: .05
 DEPTH: .005-.010
 FILL WITH PAINT, COLOR WHITE

2. ENGRAVING TO BE PLACED HORIZONTALLY AND VERTICALLY CENTERED



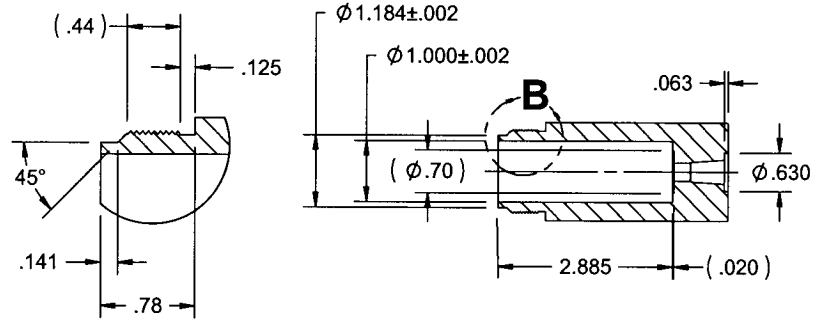
QTY REQD	CAGE CODE	PART OR IDENTIFYING NO.	NOMENCLATURE OR DESCRIPTION	MATERIAL SPECIFICATION	ITEM NO.
PARTS LIST					
UNLESS OTHERWISE SPECIFIED DIMENSIONS ARE IN INCHES TOLERANCES ARE:			PROJECT 84		
DECIMALS ANGLES			SpaceAge Control, Inc.		
X.X ± 0.03 X" ± 30'			APPROVALS DATE		
X.XXX ± 0.01			DRAWN S/O'MAHONEY 11-15-01		
X.XXX ± 0.005			CHECKED S/MCDANIEL 11-15-01		
DO NOT SCALE DRAWING			ENG S/SIMPSON 11-15-01		
MATERIAL --			MEC		
FINISH --			SUB CAGE CODE DWG. NO. 300653 REV. B		
NEXT ASSY			SCALE 1:1 CAD FILE		
APPLICATION			SHEET 1 OF 2		

This drawing contains design and other information which is the property of SpaceAge Control, Inc. Except for rights expressly granted by contract to the United States Government, this drawing and data disclosed herein or herewith is not to be reproduced, used, or disclosed in whole or in part to anyone without the written permission of SpaceAge Control, Inc.

REVISIONS			
REV.	DESCRIPTION	DATE	APPROVED

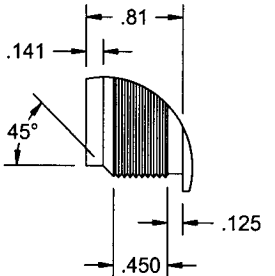
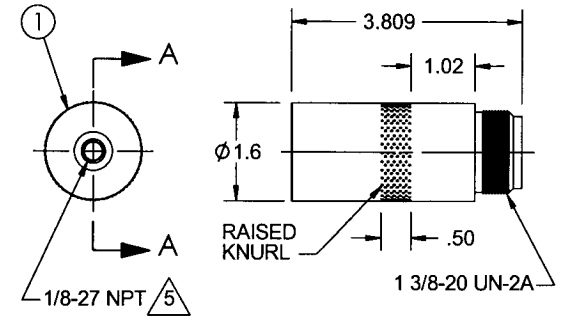
NOTES: UNLESS OTHERWISE SPECIFIED

1. BREAK EDGES .010 MAX
2. FILLET RADII .010 MAX
3. SURFACE ROUGHNESS $\sqrt{32}$ UNLESS OTHERWISE SPECIFIED (PER ANSI B46.1)
4. ALL SURFACES TO BE MACHINED, NO SANDED OR ABRASIVE FINISHES ALLOWED, EXCEPT AS NOTED
5. THREAD ENGAGEMENT FOR FITTING WILL BE 5 THREADS
6. ANODIZE PER MIL-A-8625, TYPE II, CLASS II, COLOR RED
7. DIMENSIONAL LIMITS APPLY BEFORE ANODIZING

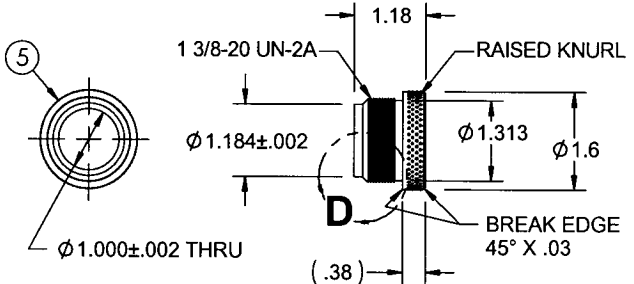


**DETAIL B
SCALE 1 : 1**

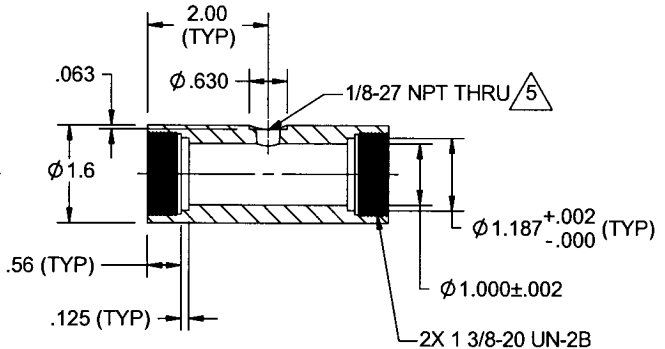
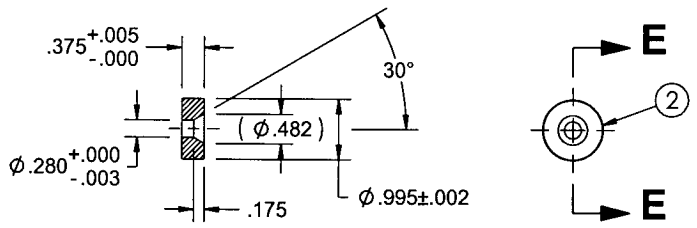
SECTION A-A



**DETAIL D
SCALE 1 : 1**



SECTION E-E



SECTION C-C

QTY REQD	CAGE CODE	PART OR IDENTIFYING NO.	NOMENCLATURE OR DESCRIPTION	MATERIAL SPECIFICATION	ITEM NO.
PARTS LIST					
UNLESS OTHERWISE SPECIFIED DIMENSIONS ARE IN INCHES TOLERANCES ARE:			PROJECT 84		
DECIMALS .XX ± 0.03			SpaceAge Control, Inc.		
ANGLES X° ± 30'			TEST FIXTURE SET		
X.XXX ± 0.005			APPROVALS DATE		
DO NOT SCALE DRAWING			DRAWN S/O'MA-HONEY 11-15-01		
MATERIAL --			CHECKED S/MCDANIEL 11-15-01		
FINISH --			ENG S/SIMPSON 11-15-01		
NEXT ASSY			MFG		
USED ON			SIZE B CAGE CODE 34851 DWG. NO. 300653		
APPLICATION			SCALE 1:2 CAD FILE SHEET 2 OF 2		
CAD GENERATED DRAWING DO NOT MANUALLY UPDATE			REV. B		