

This drawing contains design and other information which is the property of SpaceAge Control, Inc. Except for rights expressly granted by contract to the United States Government, the drawing and data disclosed herein or herewith is not to be reproduced, used, or disclosed in whole or in part to anyone without the written permission of SpaceAge Control, Inc.

NOTES: UNLESS OTHERWISE SPECIFIED

MASS PROPERTIES OF 100700-06  
 MASS = 6.664 POUNDS  
 VOLUME = 50.934 CUBIC INCHES  
 SURFACE AREA = 1154.753 SQUARE INCHES  
 CENTER OF MASS: ( INCHES )  
 LESS ELECTRICAL COMPONENTS  
 X = 0.187  
 Y = -0.187  
 Z = -31.087

PRINCIPAL AXES OF INERTIA AND PRINCIPAL MOMENTS OF INERTIA: ( POUNDS \* SQUARE INCHES )  
 TAKEN AT THE CENTER OF MASS.

$I_x = (0.006, -0.004, 1.000)$      $P_x = 16.545$   
 $I_y = (-0.600, -0.800, 0.000)$      $P_y = 2604.007$   
 $I_z = (0.800, -0.600, -0.007)$      $P_z = 2604.618$

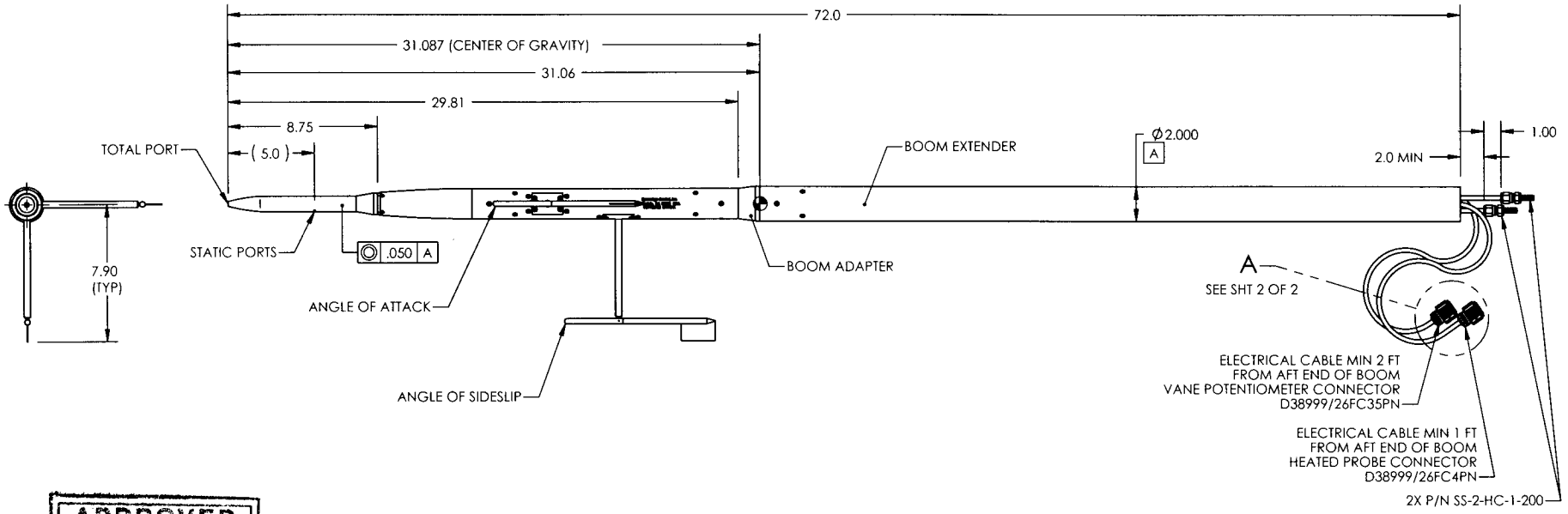
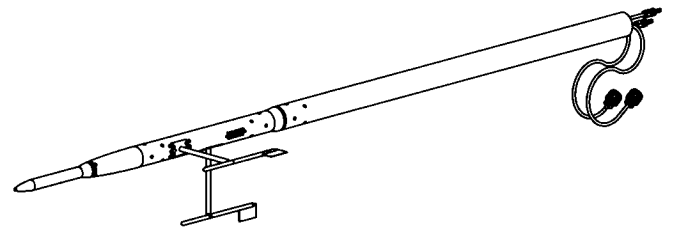
MOMENTS OF INERTIA: ( POUNDS \* SQUARE INCHES )  
 TAKEN AT THE CENTER OF MASS AND ALIGNED WITH THE OUTPUT COORDINATE SYSTEM.

$I_{xx} = 2604.310$      $I_{xy} = 0.235$      $I_{xz} = 15.130$   
 $I_{yx} = 0.235$      $I_{yy} = 2604.188$      $I_{yz} = -10.038$   
 $I_{zx} = 15.130$      $I_{zy} = -10.038$      $I_{zz} = 16.672$

MOMENTS OF INERTIA: ( POUNDS \* SQUARE INCHES )  
 TAKEN AT THE OUTPUT COORDINATE SYSTEM.

$I_{xx} = 9044.827$      $I_{xy} = 0.002$      $I_{xz} = -23.563$   
 $I_{yx} = 0.002$      $I_{yy} = 9044.703$      $I_{yz} = 28.785$   
 $I_{zx} = -23.563$      $I_{zy} = 28.785$      $I_{zz} = 17.139$

REVISIONS			
REV.	DESCRIPTION	DATE	APPROVED

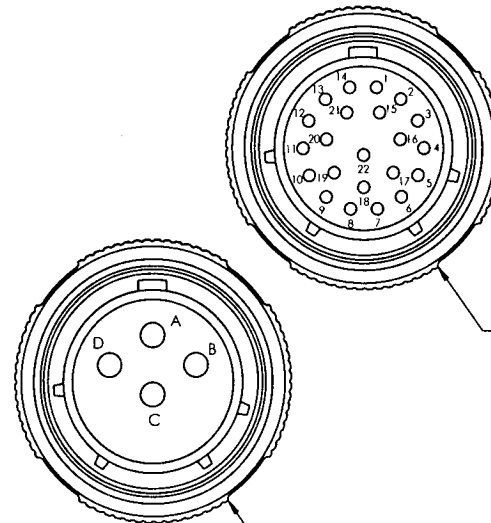
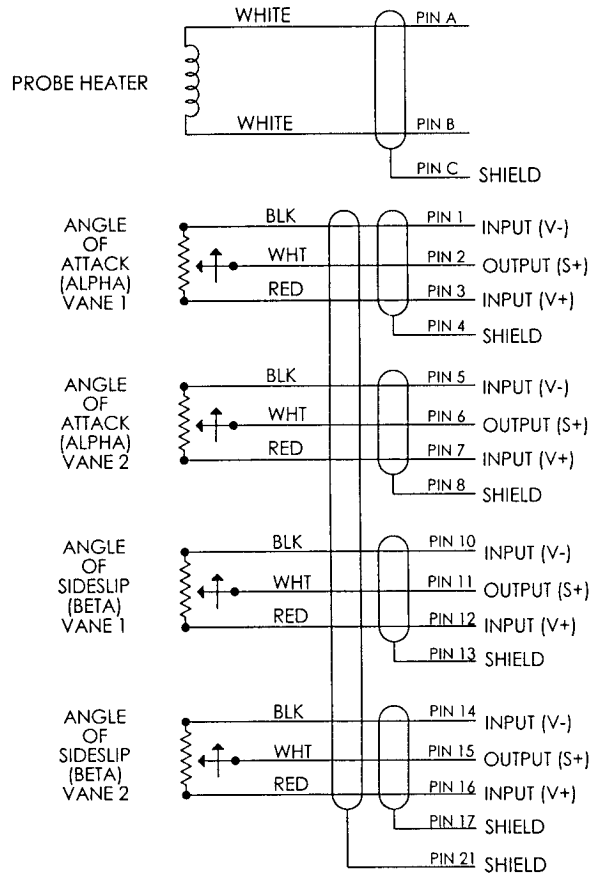


**APPROVED**  
**MASTER**  
**DRAWING**  
 PRODUCTION RELEASES  
 NOT VALID WITHOUT THIS STAMP  
 DATE: 5/14/02 BY: [Signature]

UNLESS OTHERWISE SPECIFIED DIMENSIONS ARE IN INCHES TOLERANCES ARE: DECIMALS ANGLES X.XX ± 0.03 X° ± 30' X.XXX ± 0.01 X.XXX ± 0.005 DO NOT SCALE DRAWING MATERIAL -- FINISH -- MFG -- CAD GENERATED DRAWING DO NOT MANUALLY UPDATE	PROJECT 90		SpaceAge Control, Inc.	
	APPROVALS	DATE	STRAIGHT-NOSE HEATED AIR DATA BOOM	
DRAWN BY: [Signature]	5/14/02	SHEET 1 OF 2		
CHECKED BY: [Signature]	5/13/02	SUB	LAST CODE	ENG. NO.
DATE: 5/13/02	5/13/02	B	34851	100700-06
SCALE: NTS	CAD FILE	SHEET 1 OF 2		

This drawing contains design and other information which is the property of SpaceAge Control, Inc. Except for rights expressly granted by contract to the United States Government, this drawing and data disclosed herein or here-within is not to be reproduced, used, or disclosed in whole or in part to anyone without the written permission of SpaceAge Control, Inc.

REVISIONS			
REV.	DESC. REVISION	DATE	APPROVED



VANE POTENTIOMETER CONNECTOR  
D38999/26FC35PN

HEATED PROBE CONNECTOR  
D38999/26FC4PN

**APPROVED**  
**MASTER**  
**DRAWING**  
PRODUCTION RELEASES  
NOT VALID WITHOUT THIS STAMP  
DATE: 5/14/02

UNLESS OTHERWISE SPECIFIED DIMENSIONS ARE IN INCHES TOLERANCES ARE:		PROJECT 90		SpaceAge Control, Inc.	
EXCMAIS	ANGLES	APPROVALS	DATE	<b>STRAIGHT-NOSE HEATED AIR DATA BOOM</b> CAGE CODE: 34851 DWG. NO: 100700-06 SCALE: NTS CAD FILE:	
X.X ± 0.03	X° ± 30	DRAWN	DATE		
X.XX ± 0.01	X.XXX ± 0.005	CHKD	DATE		
DO NOT SCALE DRAWING		APP'D	DATE		
MATERIAL	FINISH	MFG	SCALE	CAD FILE	SHEET 2 OF 2
NEXT ASSY	USED ON	CAD GENERATED DRAWING; DO NOT MANUALLY UPDATE			