

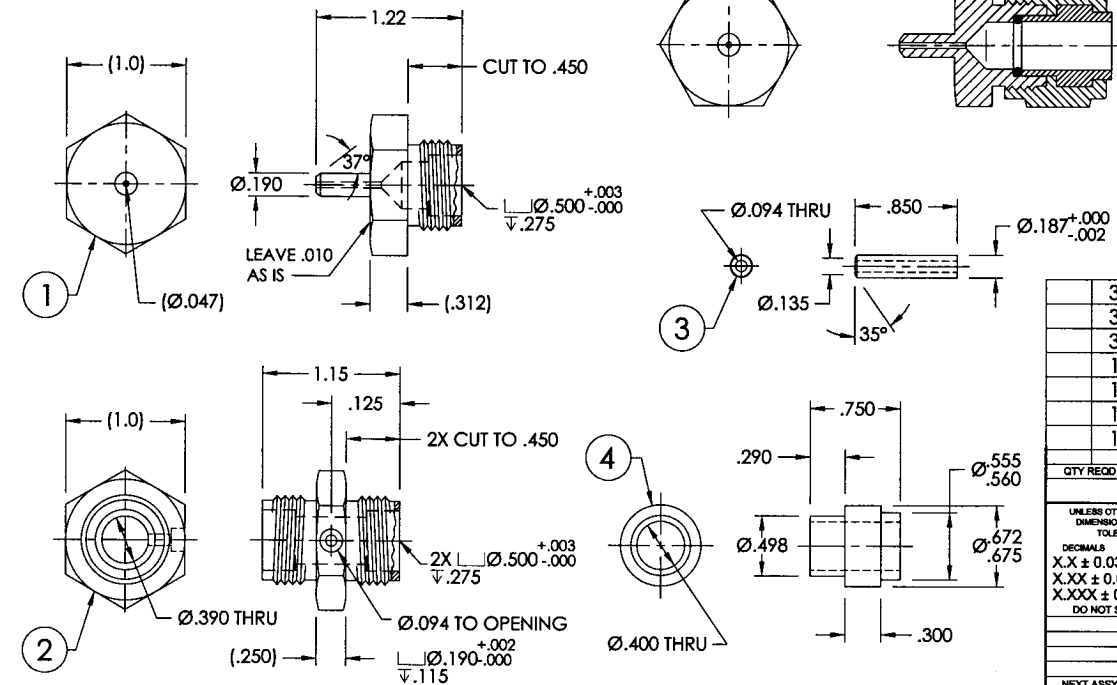
This drawing contains design and other information which is the property of SpaceAge Control, Inc. Except for rights expressly granted by contract to the United States Government, this drawing and data disclosed herein or hereafter is not to be reproduced, used, or disclosed in whole or in part to anyone without the written permission of SpaceAge Control, Inc.

REVISIONS			
REV.	DESCRIPTION	DATE	APPROVED
D	PER ECO #1145	12-14-04	S/JOHN GATES
E	PER ECO #1204	7-19-05	KoH

APPROVED
MASTER
DRAWING
PRODUCTION RELEASES
NOT VALID WITHOUT THIS STAMP
DATE 7-21-05

CAD MAINTAINED. CHANGES SHALL BE INCORPORATED BY THE DESIGN ACTIVITY

- NOTES: UNLESS OTHERWISE SPECIFIED
- BREAK EDGES .010 MAX.
 - FILLET RADIUS .010 MAX.
 - SURFACE ROUGHNESS $\sqrt{32}$ UNLESS OTHERWISE SPECIFIED (PER ANSI B46.1).
 - STRIP & ANODIZE PER MIL-A-8625, TYPE I, CLASS II, COLOR BLUE.
 - DIMENSIONAL LIMITS APPLY BEFORE ANODIZING.
 - ALL SURFACES TO BE MACHINED, NO SANDED OR ABRASIVE FINISHES ALLOWED, EXCEPT AS NOTED.
 - EPOXY (3) TO (2), USE ECCOBOND 286 OR EQUAL



QTY REQD	CAGE CODE	SYM	PART OR IDENTIFYING NO.	NOMENCLATURE OR DESCRIPTION	MATERIAL SPECIFICATION	ITEM NO.
3			9396K15-012	O-RING		6
3			100584-5	NUT	AN818-8D	5
3			100584-4	SLEEVE	2024-T351 AL ROD	4
1			100584-3	STEM	2024-T3 AL ROD	3
1			100584-2	UNION	MAKE FROM AN815-8D UNION	2
1			100584-1	REDUCER	MAKE FROM AN919-8D REDUCER	1
1			100584	TEST FIXTURE SET		~

UNLESS OTHERWISE SPECIFIED DIMENSIONS ARE IN INCHES. TOLERANCES ARE:		CONTRACT NO.		SpaceAge Control, Inc.	
DECIMALS	ANGLES	APPROVALS		TITLE	
X.X ± 0.03	X° ± 30°	S/L.W. COBB		TEST FIXTURE SET	
X.XX ± 0.01		8-30-99			
X.XXX ± 0.005		CHECKED S/MCDANIEL			
DO NOT SCALE DRAWING		ENGR S/J. GATES			
		8-30-99			
		DESIGN ACTIVITY			
NEXT ASSY	USED ON	SIZE	CAGE CODE	DWG NO.	REV.
		B	34851	100584	E
APPLICATION		SCALE		SHEET	OF
		1:1		1	1